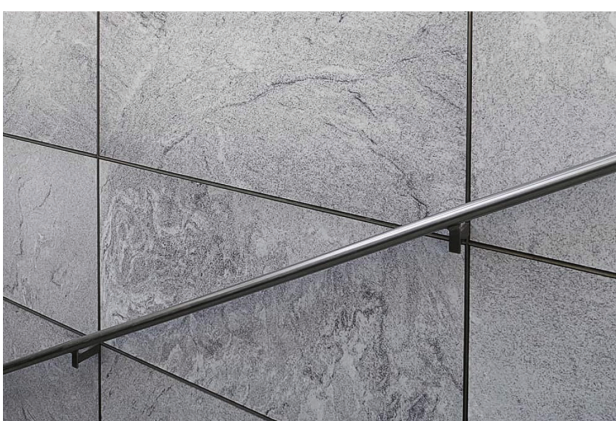
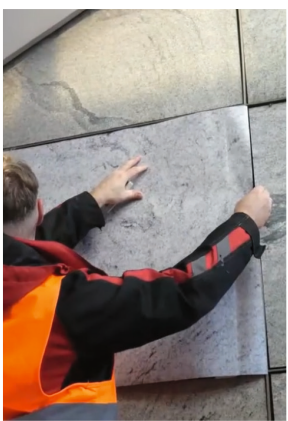


Case Study | **MagicProtect Matt ASLAN SL 99**

Cooperation partner: 0815 INDUSTRIES KG in Berlin



An efficient solution against vandalism from graffiti and stickers for railway stations and public areas using the matt protective film MagicProtect Matt ASLAN SL 99



The initial situation

Graffiti and vandalism through stickers and tagging have long been a well-known problem at railway stations and in public spaces. A study by the Berlin School of Economics and Law together with DB InfraGO AG shows that clean, well-maintained stations make a significant contribution to passengers' sense of safety – ranking even ahead of increased security personnel.*

The challenge

Deutsche Bahn incurs annual costs of €12 million for graffiti removal.** One key issue is that freshly cleaned surfaces are quickly defaced again. Until now, cleaning has only been possible with considerable labour effort and the use of chemical cleaning agents. In collaboration with 0815 INDUSTRIES KG, ASLAN has developed a solution that is easy to implement and cost-efficient, protecting surfaces from graffiti and stickers without altering their visual appearance.

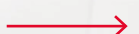
The solution

MagicProtect Matt ASLAN SL 99

Digital printing films are used, allowing the exact appearance of surfaces to be reproduced. As a manufacturer of self-adhesive speciality films, ASLAN offers a wide range of printable films suitable for various substrates – including low-energy surfaces. These films adhere very well but can also be removed without leaving residue and without damaging the underlying surface.

*https://sicherheitsbahnhof.bahnhof.de/resource/blob/13506602/782b34fc42b2ddf9b96143b133eb5d89/PM-Studie-Subjektives-Sicherheitsgefuehl-an-Bahnhoefen_29-08-2025-data.pdf, 29.4.2026

**<https://www.zeit.de/news/2026-03/25/laser-gegen-graffiti-wie-die-bahnhoefe-geputzt-werden>, 29.4.2026





The key element of the solution, however, is the protective laminate **MagicProtect Matt ASLAN SL 99**. This matt functional film can be laminated onto all printing methods and stands out due to its repellent properties. Spray paints do not adhere to the specially coated PVC laminate; instead, they bead up into droplets during application, discouraging vandals from completing their work. Any remaining paint residue can then be removed with ease. Once the paint has fully dried, a simple microfibre cloth is sufficient to wipe it away dry.

Incidentally, **MagicProtect Matt ASLAN SL 99** also helps reduce vandalism from stickers. The common phenomenon of one sticker attracting countless others is effectively prevented. Thanks to the coating, stickers – even those made of paper and typically difficult to remove – cannot properly adhere and can be peeled off protected surfaces as easily as from their backing paper.

The result

Any texture can be reproduced on the digital printing film or completely redesigned. If the original appearance is to be preserved, it can be replicated precisely. If a more modern look is desired, new designs can be developed in close consultation. This is followed by printing, laminating and applying the functional composite – after which contaminated surfaces can be cleaned much more easily, sustainably, quickly and cost-effectively.



More details on the anti-graffiti and anti-sticker functionality can be found in our YouTube video.

Conclusion

Protection – even for sensitive surfaces – at railway stations and in public spaces can be implemented in a customised and precise manner. Key advantages include more sustainable cleaning, significantly reduced labour requirements, and substantial cost savings.

The cooperation partner for this solution is 0815 INDUSTRIES KG from Berlin. The solution for combating graffiti, stickers and dirt is described in detail on the campaign website www.bahnhofspartner.de.



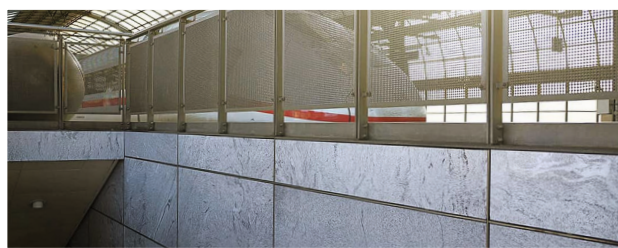
Customer testimonials

“With the execution, we are extremely satisfied – it has even exceeded our expectations.”

*Stephany Schröder
Station Management Berlin, Long-Distance Stations*

“The origins of our company lie in professional graffiti, so we are familiar with the full range of supposed protective measures. None has impressed us in terms of quality as much as ASLAN’s protective laminate.”

Jan Schmidt, 0815 INDUSTRIES KG



If you have any questions regarding specific applications, please contact our technical advisory service: +49 2204 70880

Please contact us

Fon +49 2204 708 80

E-Mail info@aslanfolien.de

For more information please visit

www.aslanfolien.de

ASLAN®

EXPERTISE IN SELF-ADHESIVE FILMS

